

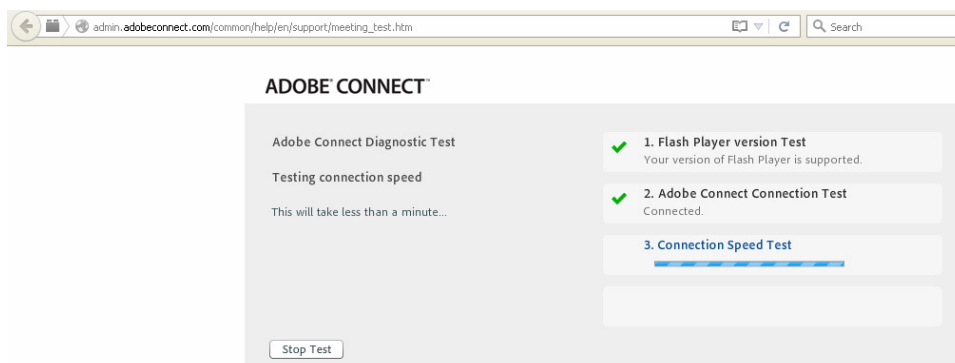
Guide for connection to RENET e-event

1. You will need for connection:

- Internet access;
- Web browser (Mozilla Firefox, Internet Explorer are recommended);
- Adobe Flash Player 10.1 or newer version;
- Loudspeaker or headphones;
- Microphone (not necessary, usually need for keyspeakers).

2. Testing the computer (it is recommended)

2.1. It is recommended to test your computer before participation in e-event. It is possible to do using the link http://admin.adobeconnect.com/common/help/en/support/meeting_test.htm

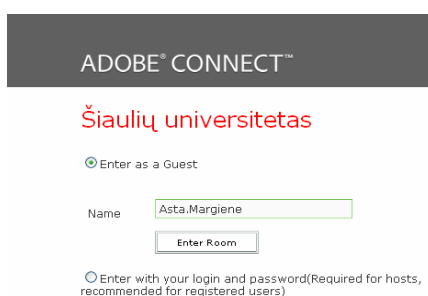


2.2. This test will show if your computer corresponds to requirements.

2.3. If results of the test are negative, You should accomplish recommended actions and do the test once more.

3. Connection to e-event

- 3.1. Click the link of the e-event from the inviting letter, got to your e-mail, or copy it to your favorite browser (if You use Mozilla Firefox and You got security alert, please, look the 7-th point).
- 3.2. In the appeared window of connection, please, choose **Enter as a Guest** and enrol your name, surname, institution (in shorter version) and the code of country in the field **Name** (i.e. Name Surname, Siauliai University, LT). Click **Enter**.



ADOBE® CONNECT™

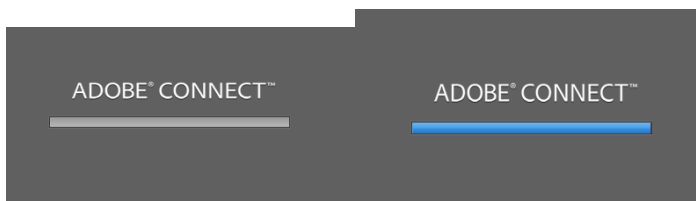
Šiaulių universitetas

Enter as a Guest

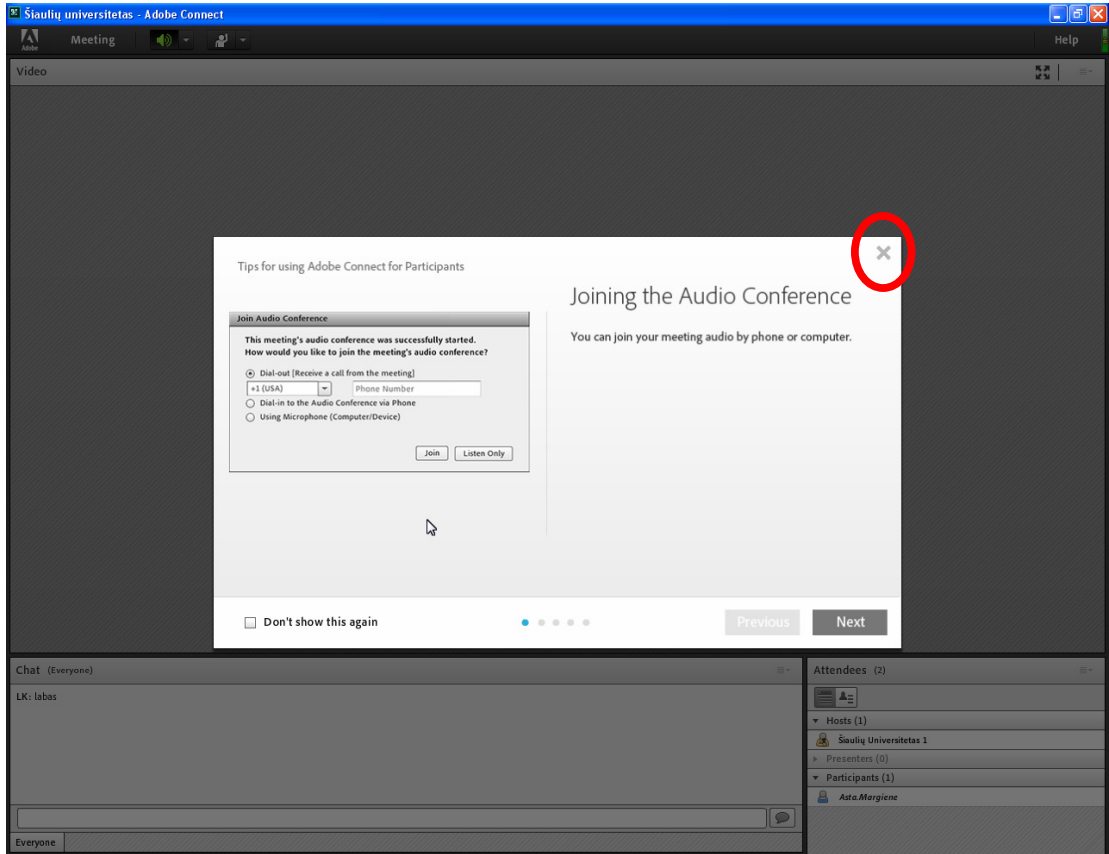
Name

Enter with your login and password(Required for hosts, recommended for registered users)

- 3.3. Wait for the connection to the virtual room of Adobe Connect

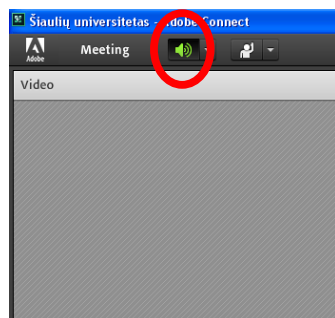


3.4. After connection You will see the room's link and the instruction for use. Click off the guide.



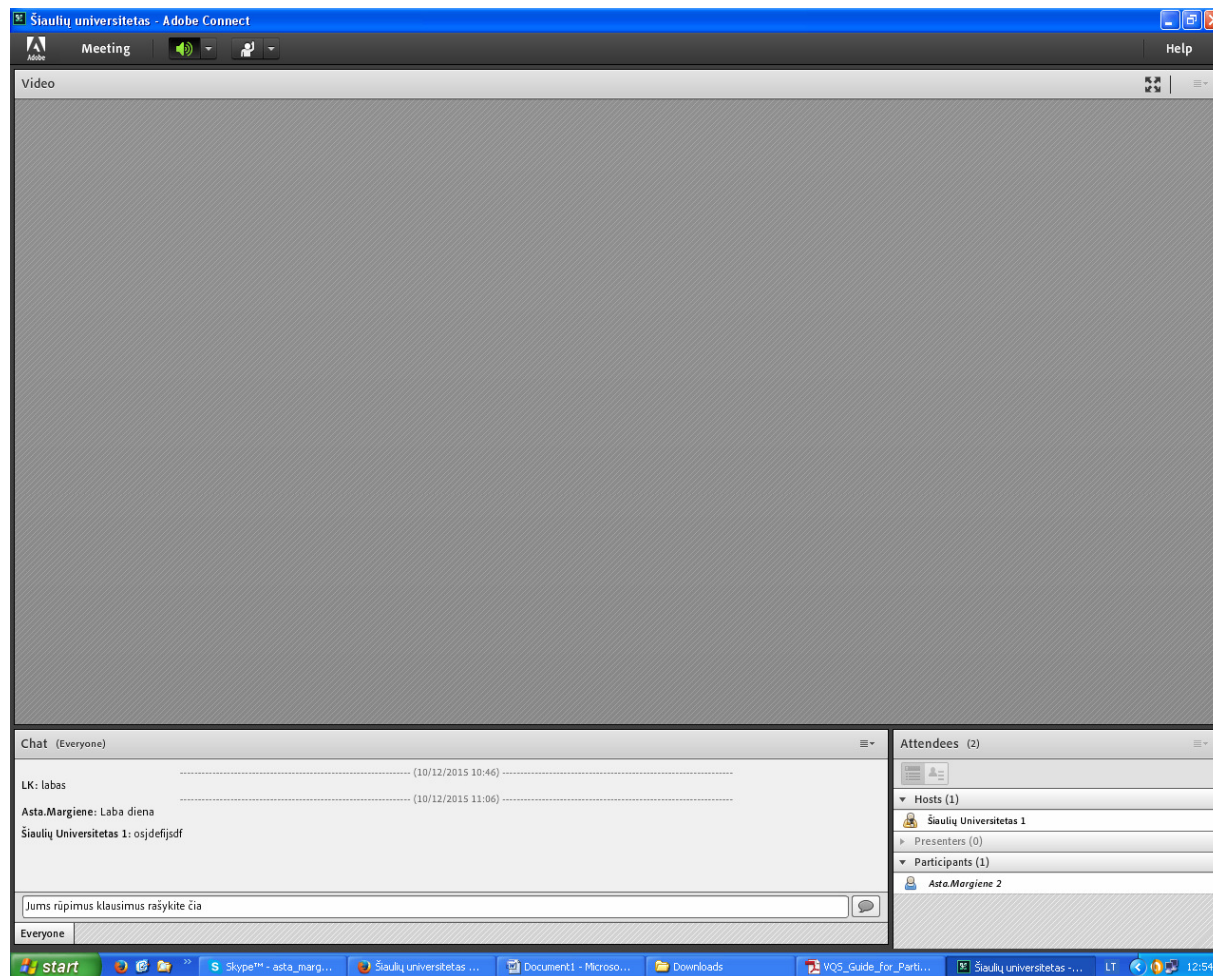
4. Volume

Make sure, that Volume is on. The icon must be green. If it is grey, please, click it.



5. Submitting questions in the chat

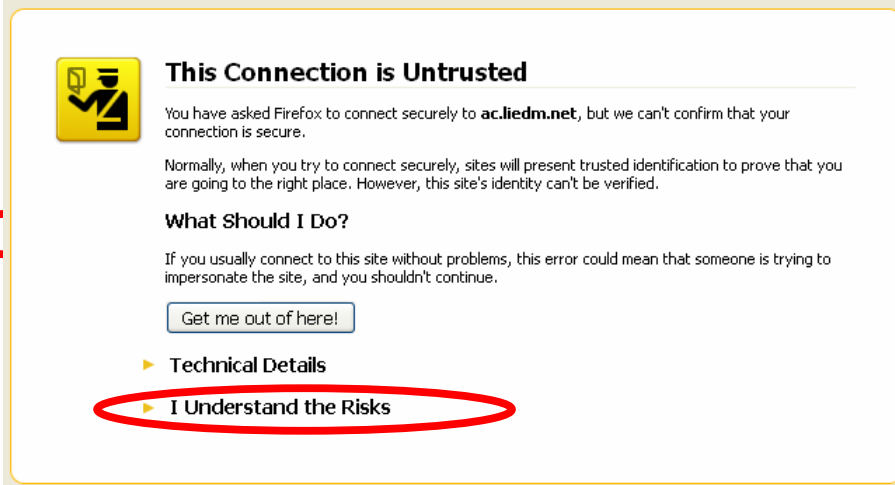
You can submit questions during e-event by enrolling them to the field of **Chat** and clicking **Enter** in your keyboard.




6. Problems and solutions

Problems	Solutions
You cannot connect to e-event	If You cannot connect, please, make sure: <ol style="list-style-type: none">1. Do You connect to e-event as a Guest (3rd point);2. If the e-conference window is not blocked by Popup blocking software;3. Using Mozilla Firefox and getting security alert, please, read the 7th point.
No Volume	<ol style="list-style-type: none">1. Make sure, that loadspeakers of your computer are on and and the appropriate sound level is determined;2. Make sure, that the volume in your e-event window in on garsas (4th point).

7. NOTICE. Conneting via Mozilla Firefox browser and getting the security allert



 **This Connection is Untrusted**

You have asked Firefox to connect securely to **ac.liedm.net**, but we can't confirm that your connection is secure.

Normally, when you try to connect securely, sites will present trusted identification to prove that you are going to the right place. However, this site's identity can't be verified.

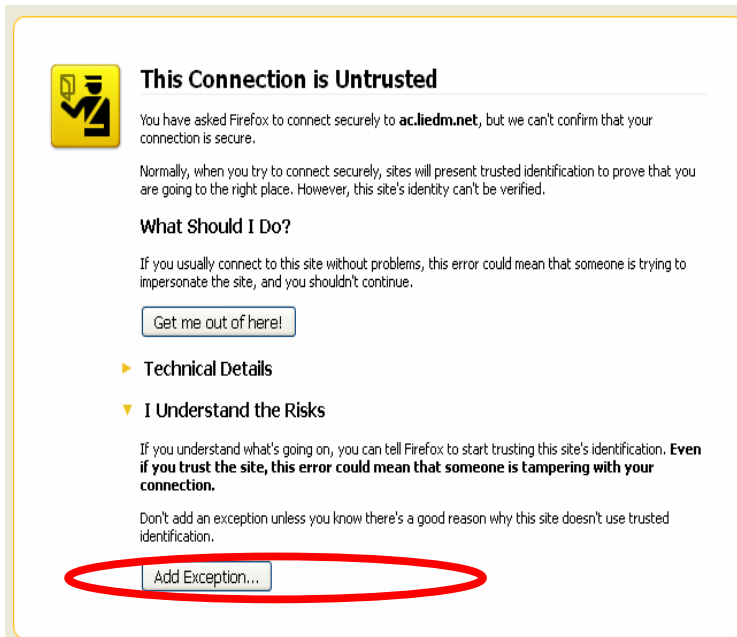
What Should I Do?

If you usually connect to this site without problems, this error could mean that someone is trying to impersonate the site, and you shouldn't continue.

- ▶ **Technical Details**
- ▶ **I Understand the Risks**

Please, click **I Understand the Risks...**

... then click **Add Exception**.



This Connection is Untrusted

You have asked Firefox to connect securely to **ac.riedm.net**, but we can't confirm that your connection is secure.

Normally, when you try to connect securely, sites will present trusted identification to prove that you are going to the right place. However, this site's identity can't be verified.

What Should I Do?

If you usually connect to this site without problems, this error could mean that someone is trying to impersonate the site, and you shouldn't continue.

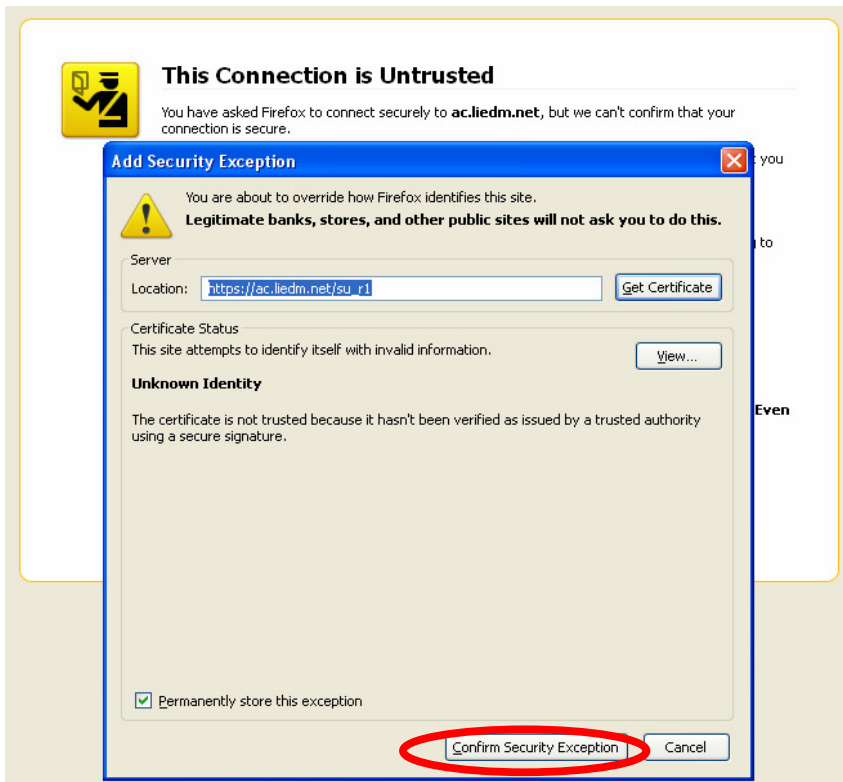
► **Technical Details**

▼ **I Understand the Risks**

If you understand what's going on, you can tell Firefox to start trusting this site's identification. **Even if you trust the site, this error could mean that someone is tampering with your connection.**

Don't add an exception unless you know there's a good reason why this site doesn't use trusted identification.

In opened window **Add Security Exception**, please, choose **Confirm Security Exception**



This Connection is Untrusted

You have asked Firefox to connect securely to **ac.riedm.net**, but we can't confirm that your connection is secure.

Add Security Exception

You are about to override how Firefox identifies this site.
Legitimate banks, stores, and other public sites will not ask you to do this.

Server

Location:

Certificate Status

This site attempts to identify itself with invalid information.

Unknown Identity

The certificate is not trusted because it hasn't been verified as issued by a trusted authority using a secure signature.

Permanently store this exception

Then You can connect to the e-event as it was showed in the 3rd point.